

HSF RoHS

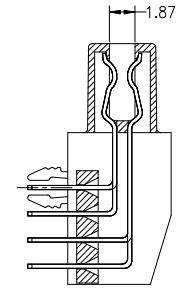
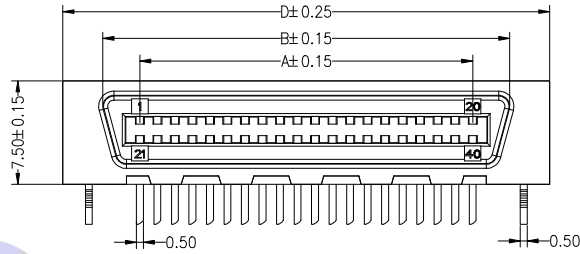
SPECIFICATIONS

Rated Current:1.0AMP
 Contact Resistance:35mΩ Max
 Withstand Voltage:500V AC/DC
 Insulation Resistance:500MΩ Min
 Operation Temperature:-40°C to +105°C

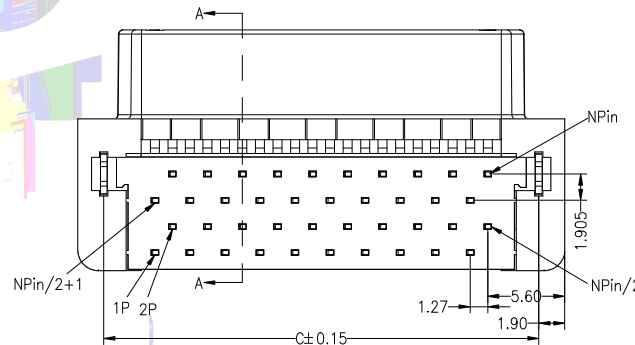
MATERIAL:

Contact Material:Phosphor bronze
 Boardlocks:Brass
 Insulator Material:LCP Polyester(UL94V-0)
 Max.Processing Temp: 260°C±5°C For 5~10 Second

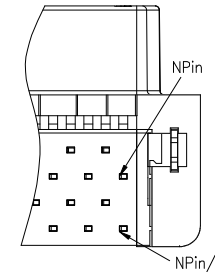
Connector Solder Tails Will Accommodate Printed
 Circuit Board Thickness Of 0.80 To 1.60



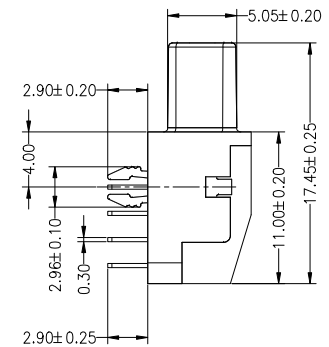
Section A-A



For 20,40,60,80,100,120Pin



For 30,50Pin



Ordering Information

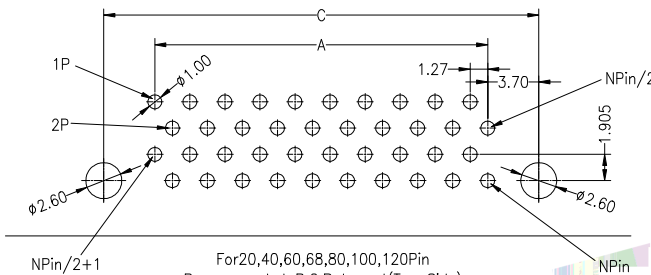
6314 FXXX R D S2 P W A XX

No. of Pins
 20,30,40,50,
 60,68,80,100,120P

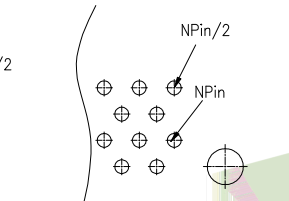
Connector Type
 R:Right Angle

Contact Plating
 G0:Gold Flash
 S0:Gold Flash/Tin
 S2:30" Gold /Tin
 S3:5U" Gold /Tin
 S4:10U" Gold /Tin
 S5:15U" Gold /Tin
 S6:30U" Gold /Tin

Code Stream



For 20,40,60,80,100,120Pin
 Recommended P.C.B Layout(Top Side)
 (PCB BOARD TOLERANCE±0.05)



For 30,50Pin
 Recommended P.C.B Layout(Top Side)
 (PCB BOARD TOLERANCE±0.05)

No Of Pins	A	B	C	D
20	11.43	16.80	18.80	22.60
30	17.78	23.15	25.15	28.95
40	24.13	29.50	31.50	35.30
50	30.48	35.85	37.85	41.65
60	36.83	42.20	44.20	48.00
68	41.91	47.28	49.28	53.08
80	49.53	54.90	56.90	60.70
100	62.23	67.60	69.60	73.40
120	74.93	80.30	82.30	86.10

OPERATION		DRAW	Jelly Feng	2023.12.09
X.X	±0.30			
X.XX	±0.20	CHECK		
X.XXX	±0.10			
Angle	±3°	APPROVE		
DIM	TOL			

SCALE	FIT	PART NO.	
UNIT	mm	6314FXXXRDS2PWAXX	
SIZE	A4	TITLE: M-type SCSI Female NPin All-Plastic 90°	
SHEET	1/1		
PROJ.			

JILN 深圳市锦凌电子有限公司
 SHENZHEN JINLING ELECTRONICS CO.,LTD
 Tel: 86-755-2997-5806/5802 Fax: 86-755-2997-5992

REV	DATE	MODIFICATION DESCRIPTION	CHANGE
A0	2023.12.09	NEW DRAWING	