

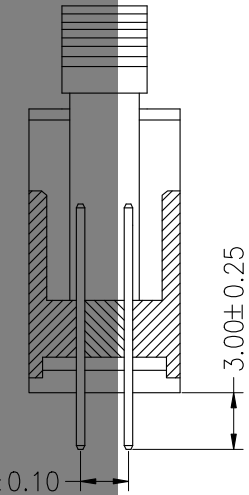
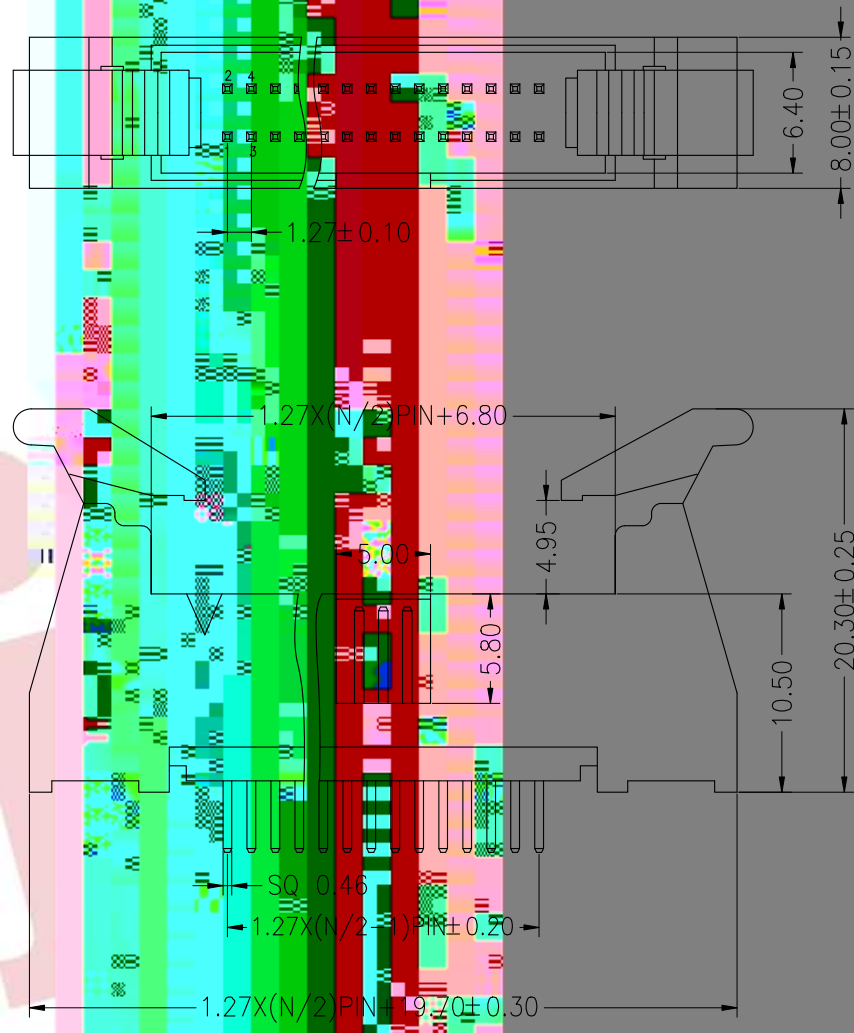
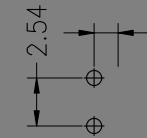


**SPECIFICATIONS**

Rated Current:1.0AMP  
 Contact Resistance:20mΩ Max  
 Withstand Voltage:500V AC/DC  
 Insulation Resistance:1000MΩ Min  
 Operation Temperature:-40°c to +105°c

Contact Material:Brass  
 Contact Plating:Au or Sn Over Ni  
 Insulator Material:Polyester(UL94V-0)  
 Resistance To Soldering Heat:  
 245° C±5° C, 10s(PBT insulator)  
 260° C±5° C, 10s(PA6T&PA9T&LCP insulator)

Recommended P.C.B Layout(Top Side)  
 (PCB BOARD TOLERANCE±0.05)



**Ordering Information**

**3340 XX S XX X B L X 0X**

No.of Pins  
10--100

Contact Plating  
 G0:Gold Flash  
 G1:1u" Gold  
 G2:1.5u" Gold  
 G3:2u" Gold  
 G4:3u" Gold  
 G5:5u" Gold  
 G6:10u" Gold  
 G7:15u" Gold  
 G8:30u" Gold  
 S0:Gold Flash/Tin  
 SN:Tin

Insulator Material Option  
 A=BK-PBT  
 C=BK-PA6T  
 E=BK-PA9T

Color Type  
 B=Black

Packing  
 A=Tray  
 T=Tube  
 R=Reel

OPERATION

X.X ±0.30

X.XX ±0.20

X.XXX ±0.10

Angle ±3°

DIM TOL

DRAWN Wei Chen

21.04.14

SCALE

FIT

UNIT

mm

SIZE

A4

SHEET

1/1

PROJ.

CHECK

APPROVE

PART NO.

3340XXSXXBLX0X

TITLE:

1.27\*2.54mm ejector header Npin 180°

A0 2021.04.14 NEW DRAWING

REV DATE MODIFICATION DESCRIPTION CHANGE