

# HSF RoHS

## SPECIFICATIONS

Current rating: 5.6AMP.

Contact resistance: 15m $\Omega$  max. at 100mA DC

Insulation resistance: 1000M $\Omega$  min. at 500V DC

Dielectric withstanding voltage: 1500V AC For 1minute

Operating temperature: -55°C TO +125°C

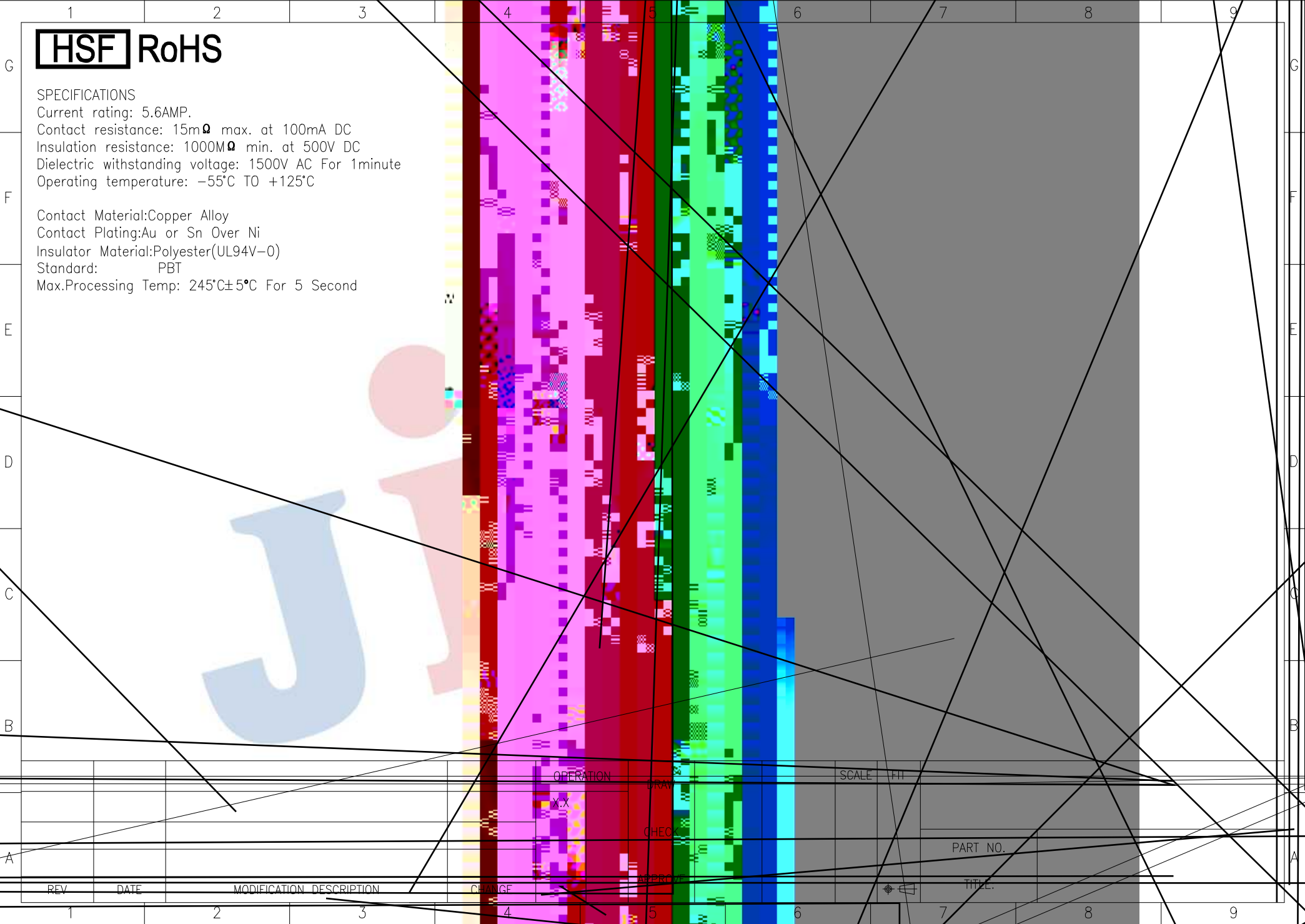
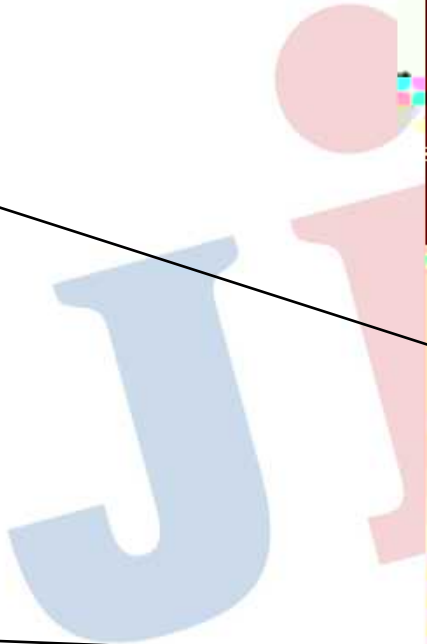
Contact Material:Copper Alloy

Contact Plating:Au or Sn Over Ni

Insulator Material:Polyester(UL94V-0)

Standard: PBT

Max.Processing Temp: 245°C $\pm$ 5°C For 5 Second



OPERATION

DRAW

SCALE

FIT

X-X

CHECK

PART NO.

APPROVED

TITLE

REV

DATE

MODIFICATION DESCRIPTION

CHANGE

1

2

3

4

5

6

7

8

9