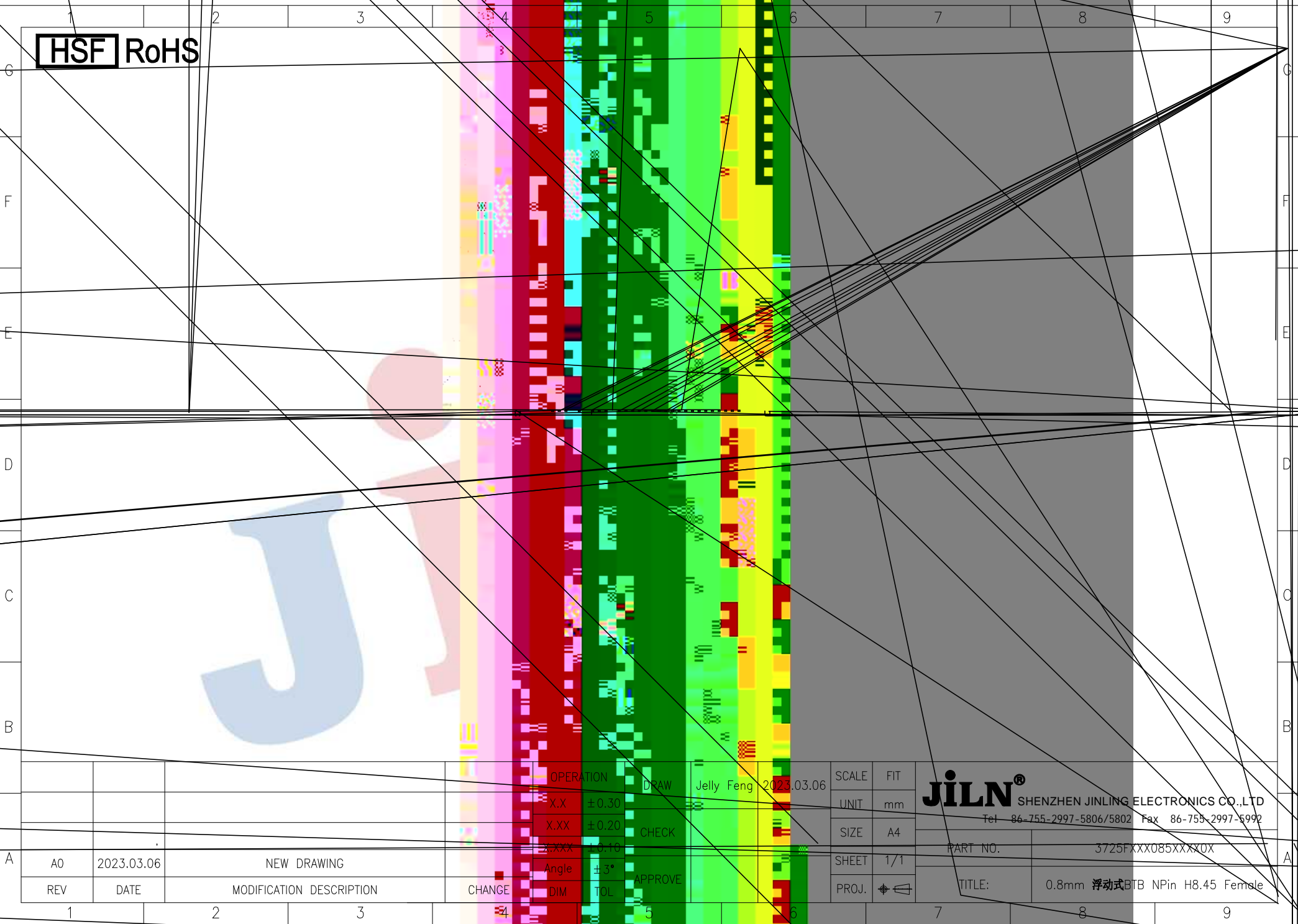
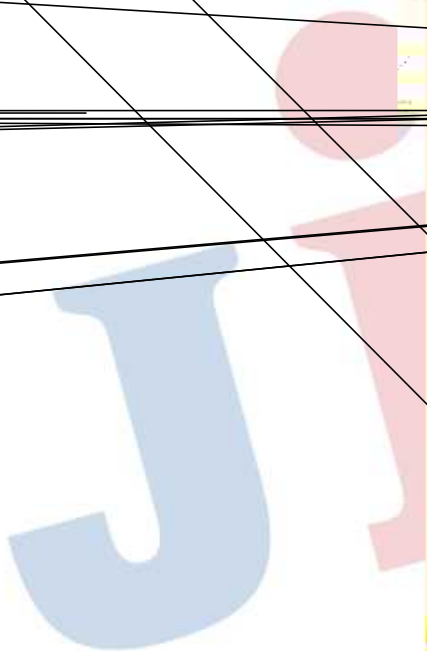


HSF RoHS



OPERATION	DRAW	Jelly Feng	2023.03.06
X.X	±0.30		
X.XX	±0.20	CHECK	
X.XXX	±0.10		
Angle	±3°	APPROVE	
DIM	TOL		

SCALE	FIT
UNIT	mm
SIZE	A4
SHEET	1/1
PROJ.	

JILN[®] SHENZHEN JINLING ELECTRONICS CO.,LTD
 Tel 86-755-2997-5806/5802 Fax 86-755-2997-5992

PART NO.	3725FXXX085XXX0X
TITLE:	0.8mm 浮动式 BTB NPin H8.45 Female

REV	DATE	MODIFICATION DESCRIPTION	CHANGE
A0	2023.03.06	NEW DRAWING	